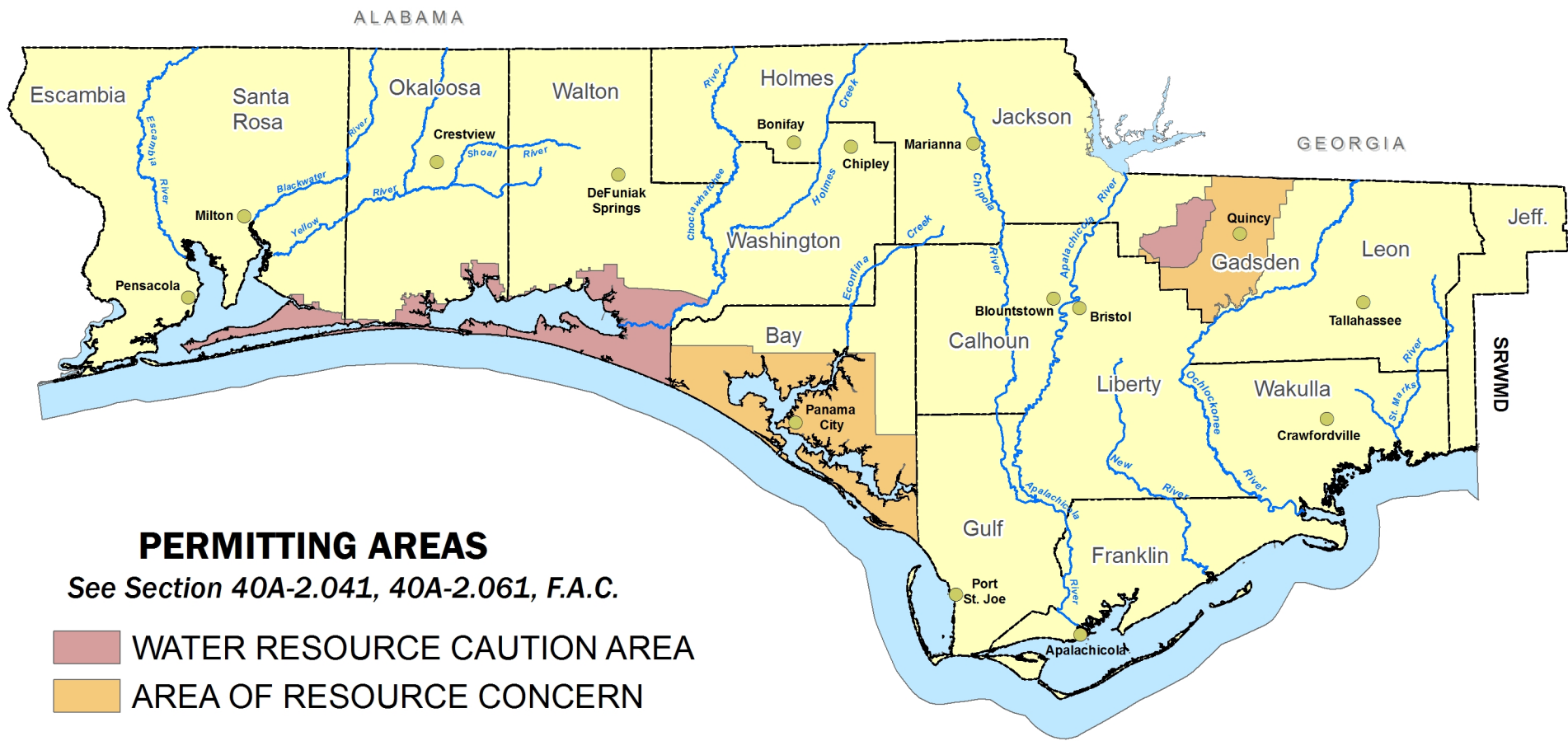


FIGURE 2-1

GENERAL MAP FOR WATER USE PERMITTING





REF. SECTION 40A-2.902, F.A.C.
EFFECTIVE DATE: May 29, 2014



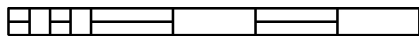
PERMITTING AREAS

See Section 40A-2.041, 40A-2.061, F.A.C.

-  WATER RESOURCE CAUTION AREA
-  AREA OF RESOURCE CONCERN

SCALE

0 5 10 20 30 40 50



Miles





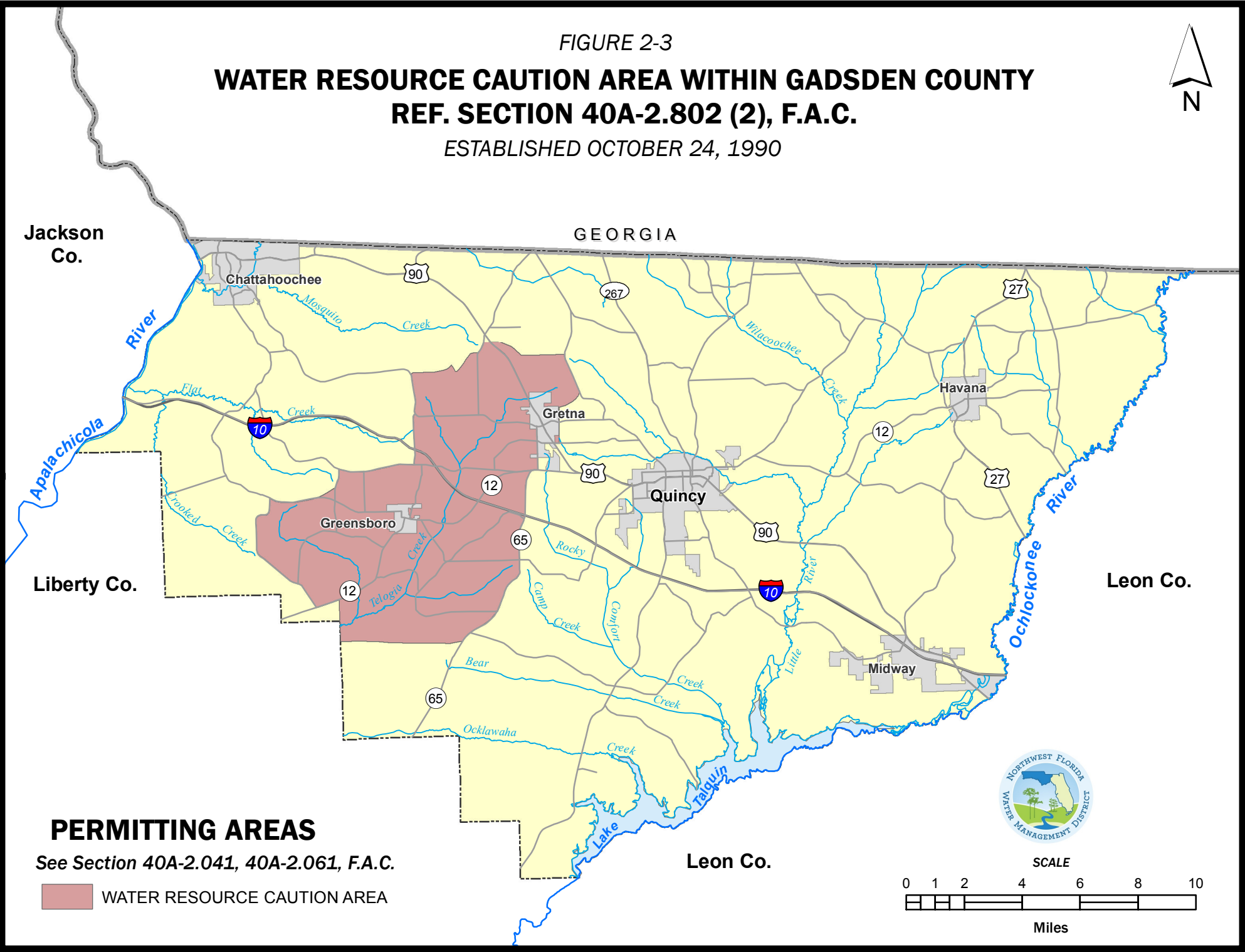
FIGURE 2-2
**WATER RESOURCE CAUTION AREA WITHIN REGION II
IN SANTA ROSA, OKALOOSA AND WALTON COUNTIES**
REF. SECTION 40A-2.802 (1), F.A.C.
ESTABLISHED AUGUST 1, 1989



FIGURE 2-3

WATER RESOURCE CAUTION AREA WITHIN GADSDEN COUNTY REF. SECTION 40A-2.802 (2), F.A.C.

ESTABLISHED OCTOBER 24, 1990



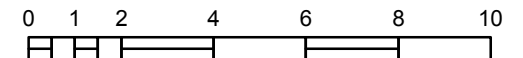
PERMITTING AREAS

See Section 40A-2.041, 40A-2.061, F.A.C.

 WATER RESOURCE CAUTION AREA



SCALE



Miles